

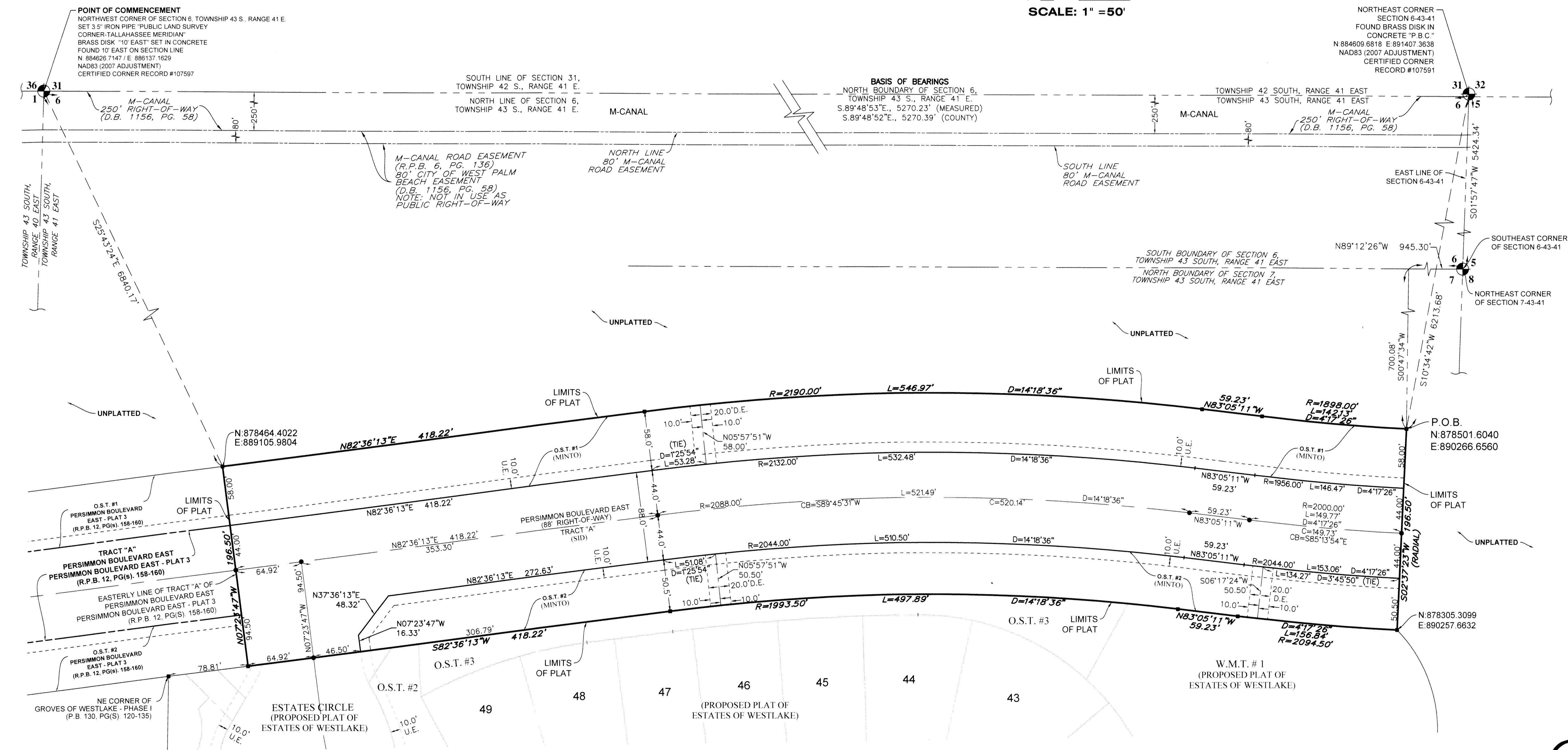
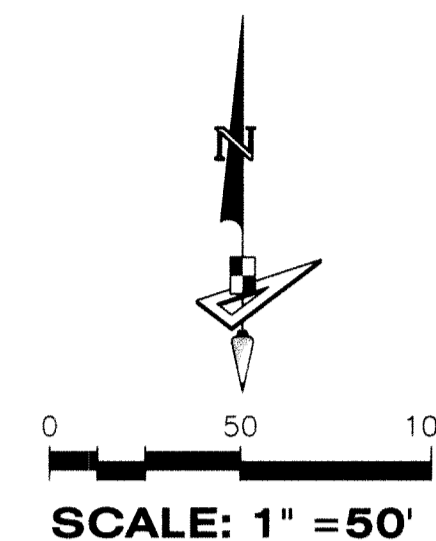
# PERSIMMON BOULEVARD EAST - PLAT 4

BEING A PORTION OF SECTION 7, TOWNSHIP 43 SOUTH, RANGE 41 EAST, CITY OF WESTLAKE,  
PALM BEACH COUNTY, FLORIDA.

107

LEGEND	
P.O.B. ----- POINT OF BEGINNING	R ----- RADIUS
P.O.C. ----- POINT OF COMMENCEMENT	L ----- ARC LENGTH
P.B. ----- PLAT BOOK	D ----- DELTA ANGLE
R.P.B. ----- ROAD PLAT BOOK	CB ----- CHORD BEARING
D.B. ----- DEED BOOK	C ----- CHORD
PG./PG(S) ----- PAGE(S)	R/W ----- RIGHT-OF-WAY
NAD ----- NORTH AMERICAN DATUM	S.I.D. ----- SEMINOLE IMPROVEMENT DISTRICT
W.M.T. ----- WATER MANAGEMENT TRACT	PRM ----- PERMANENT REFERENCE MONUMENT
O.S.T. ----- OPEN SPACE TRACT	● ----- PERMANENT CONTROL POINT
P.B.C. ----- PALM BEACH COUNTY	□ ----- FOUND PERMANENT REFERENCE MONUMENT
U.E. ----- UTILITY EASEMENT	■ ----- SET 4"x4" CONCRETE MONUMENT WITH 2" ALUMINUM DISK STAMPED "PRM LB 7768"
L.M.A.E. ----- LAKE MAINTENANCE ACCESS EASEMENT	
7-43-41 ----- SECTION-TOWNSHIP-RANGE	

COORDINATES SHOWN HEREON ARE FLORIDA STATE PLANE GRID  
 DATUM = NAD83 2007 ADJUSTMENT  
 ZONE = FLORIDA EAST  
 LINEAR UNITS = US SURVEY FEET  
 COORDINATE SYSTEM = 1983 STATE PLANE  
 PROJECTION = TRANSVERSE MERCATOR  
 ALL DISTANCES ARE GROUND  
 SCALE FACTOR = 1.0000  
 GROUND DISTANCE X SCALE FACTOR = GRID DISTANCE  
 PLAT BEARING = GRID BEARING  
 NO ROTATION  
 ALL TIES TO SECTION CORNERS AND QUARTER CORNERS ARE GENERATED FROM MEASURED VALUES



**NOTICE:**  
 THIS PLAT, AS RECORDED IN ITS GRAPHIC FORM, IS THE OFFICIAL DEPICTION OF THE SUBDIVIDED LANDS DESCRIBED HEREIN AND WILL IN NO CIRCUMSTANCES BE SUPPLANTED IN AUTHORITY BY ANY OTHER GRAPHIC OR DIGITAL FORM OF THE PLAT. THERE MAY BE ADDITIONAL RESTRICTIONS THAT ARE NOT RECORDED ON THIS PLAT THAT MAY BE FOUND IN THE PUBLIC RECORDS OF THIS COUNTY.

**BASIS OF BEARINGS**  
 BEARINGS SHOWN HEREON ARE BASED ON THE NORTH BOUNDARY OF SECTION 6, TOWNSHIP 43 SOUTH, RANGE 41 EAST, HAVING A GRID BEARING OF S.89°48'53"E. (MEASURED). BEARINGS SHOWN HEREON, REFER TO THE STATE PLANE COORDINATE SYSTEM, NORTH AMERICA DATUM OF 1983 (NAD 83 - '07) FOR THE EAST ZONE OF FLORIDA. SAID BASIS OF BEARING IS THE SAME IN THE NORTH AMERICAN DATUM OF 1983 (NAD 83 - '90).

**NOTE:** EASEMENTS, BUFFERS AND OTHER SUCH LABELS AND DIMENSIONS OF A PARALLEL NATURE AS SHOWN HEREON AND INDICATED TO THE NEAREST FOOT (IE: 5' UTILITY EASEMENT) ARE ASSUMED TO BE THE SAME DIMENSION EXTENDED TO THE NEAREST HUNDRETH OF A FOOT WITH NO GREATER OR LESSER VALUE (IE: 5' = 5.000') (IE: 7.5' = 7.500')